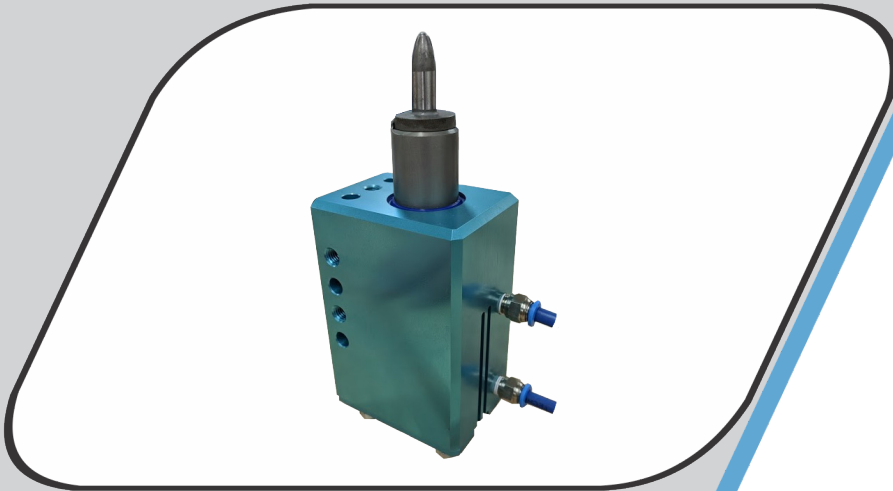


NAAMS Retractable Pin

Compact Locating Pin, 25mm Stroke



Features

- High Strength 7075-T6 Aluminum
- Backup Mounting on Top
- 3-side Mounting Choice
- High Performance Seal
- Rap Coupler, 3mm

Benefits

- Highly repeatable
- Large bore for light welding applications (Up to 160 lbf of pull force)
- Can absorb high side load without jam

Switch Options*

- Standard Round Solid State Switch

Pin Options*

- Up to 16mm Diameter
- Standard NAAMS Pins

*Sold separately

5825 Triangle Dr, Suite 101
Raleigh, NC 27617
833-2-CAROMATION
(833-222-7662) Toll free
www.caromation.com

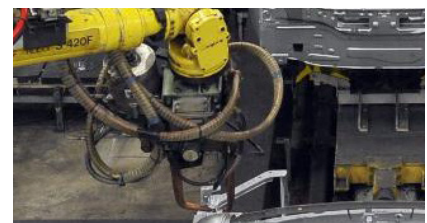


Choice of 3
mounting sides

Useable in all
orientations

Applications

- Seating
- Small frame assembly fixtures
- End of arm tooling (EOAT)

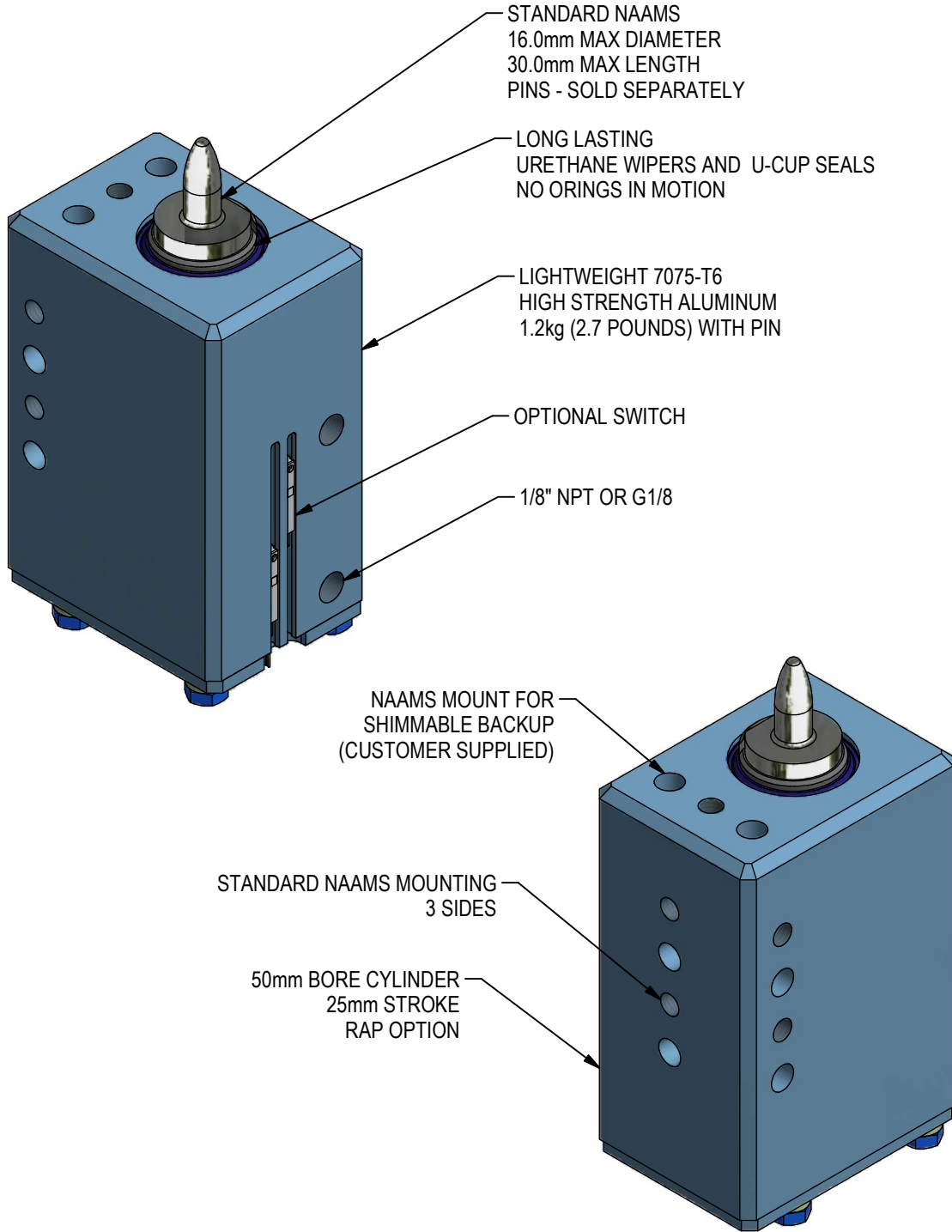


CAROMATION
simplifying automation

CAROMATION

simplifying automation

NAAMS RETRACTABLE PIN



APPLICATIONS:

- SEATING AND SMALL FRAME ASSEMBLY FIXTURES
- END OF ARM TOOLING (EOAT)

ROUND PINS ONLY
NO ANTI-ROTATE FEATURE

NAAMS RETRACTABLE PIN

ORDER INFORMATION

NAAMS RETRACTABLE PIN					PORTS	COUPLER	SWITCH CODE		PIN
N	R	A	-	50	N	0	B A	-	

NPT or G PORTS	
N	1/8 NPT PORTS
G	G1/8 PORTS

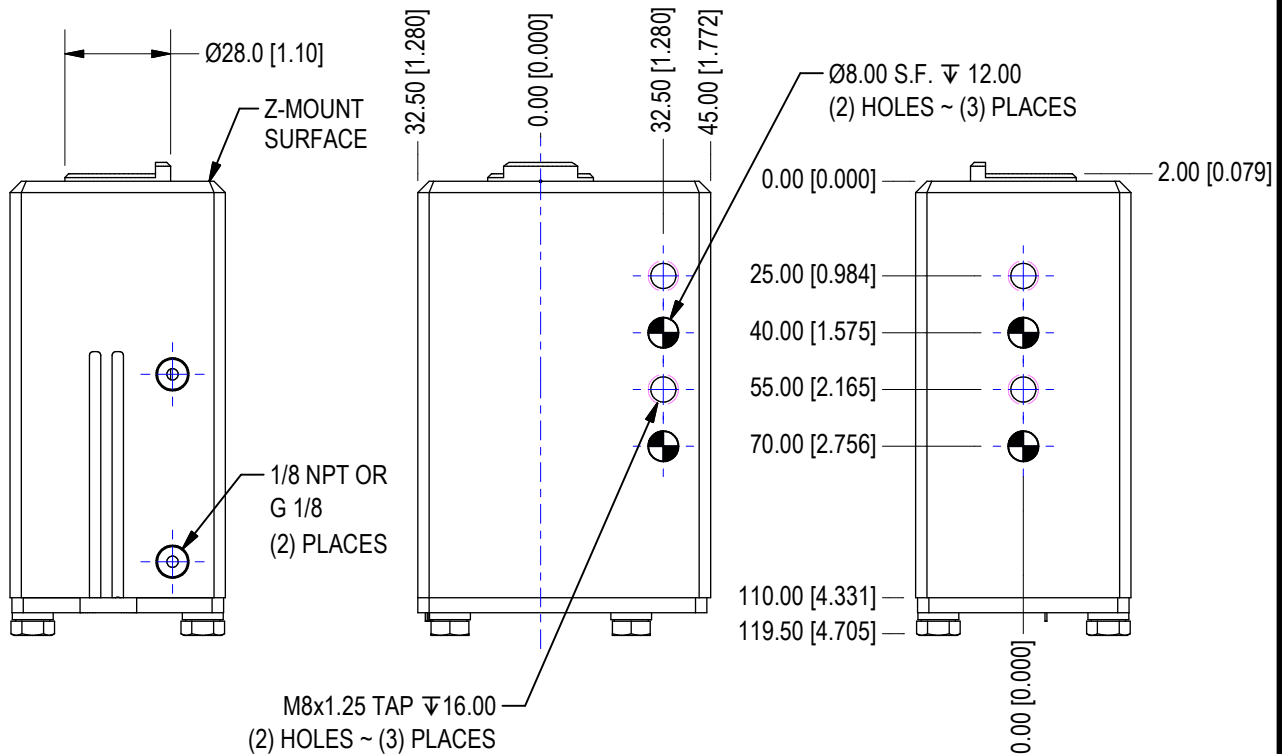
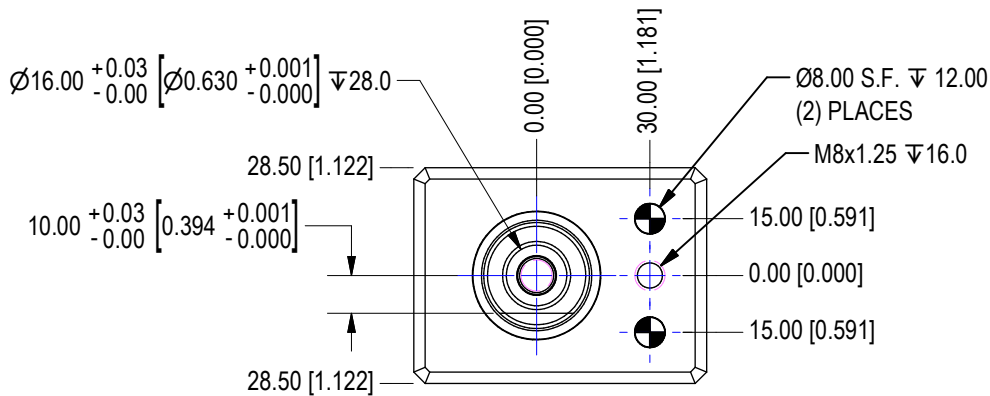
RAP or RIGID	
0	RAP COUPLER
1	RIGID COUPLER

SWITCH CODE - SEE SWITCH CHART		
0	0	NO SWITCH
S	A	SMC SWITCH
B	A	BALLUFF SWITCH
T	A	TURCK SWITCH

NAAMS PIN	
LEAVE BLANK FOR NO PIN	
ADD NAMMS PIN NUMBER TO END OF PART NUMBER FOR INSTALLED PINS	

NAAMS RETRACTABLE PIN

GENERAL INFORMATION



APPROX 1.2kg (2.7 lbf)

* THIS UNIT IS FOR 4-WAY PINS ONLY
NO ANTI-ROTATE FEATURE AVAILABLE

NAAMS RETRACTABLE PIN

PIN INFORMATION

CAROMATION'S NAAMS RETRACTABLE PIN ASSEMBLY USES STANDARD NAAMS PINS.

NAAMS PINS CAN BE FOUND AT www.naamsstandards.org CHAPTER 'I'.

ACCEPTABLE PIN STYLES ARE:

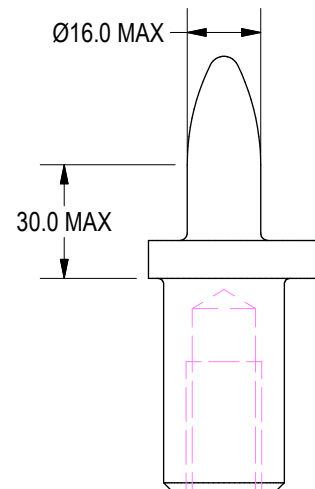
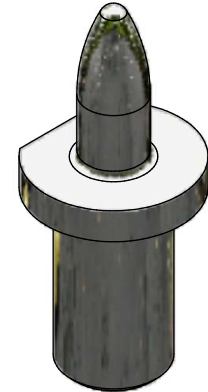
- APS SERIES
- APS SERIES
- APR SERIES
- APQ SERIES

ALL PIN SERIES MUST BE NO GREATER THAN 16mm AND NO LONGER THAN 30mm.

TO ORDER PIN INSTALLED, ADD THE FULL NAAMS PART NUMBER TO THE END OF THE RETRACTABLE PIN ORDER STRING.

MAX SIDE LOAD ON PIN IS 20 POUNDS.

GREATER SIDE LOADS AND LONGER PINS ARE ACCEPTABLE UP TO 50 POUNDS; HOWEVER, GREATER DEFLECTION THAN +/-0.005" MAY OCCUR.



SWITCH INFORMATION

Compatible Solid State Switches		
Normally Open, 3 Wire, PNP, 24V, M12 Connector with 4 Pins, 0.5m		
Vendor	Caromation Code	Vendor Part Number
SMC	SA	D-M9PSDPC
Balluff	BA	BMFO0ER
Turck	TA	BIM-UNR-AP6X-0.5M-RS 4T W/M

SPARE PARTS INFORMATION

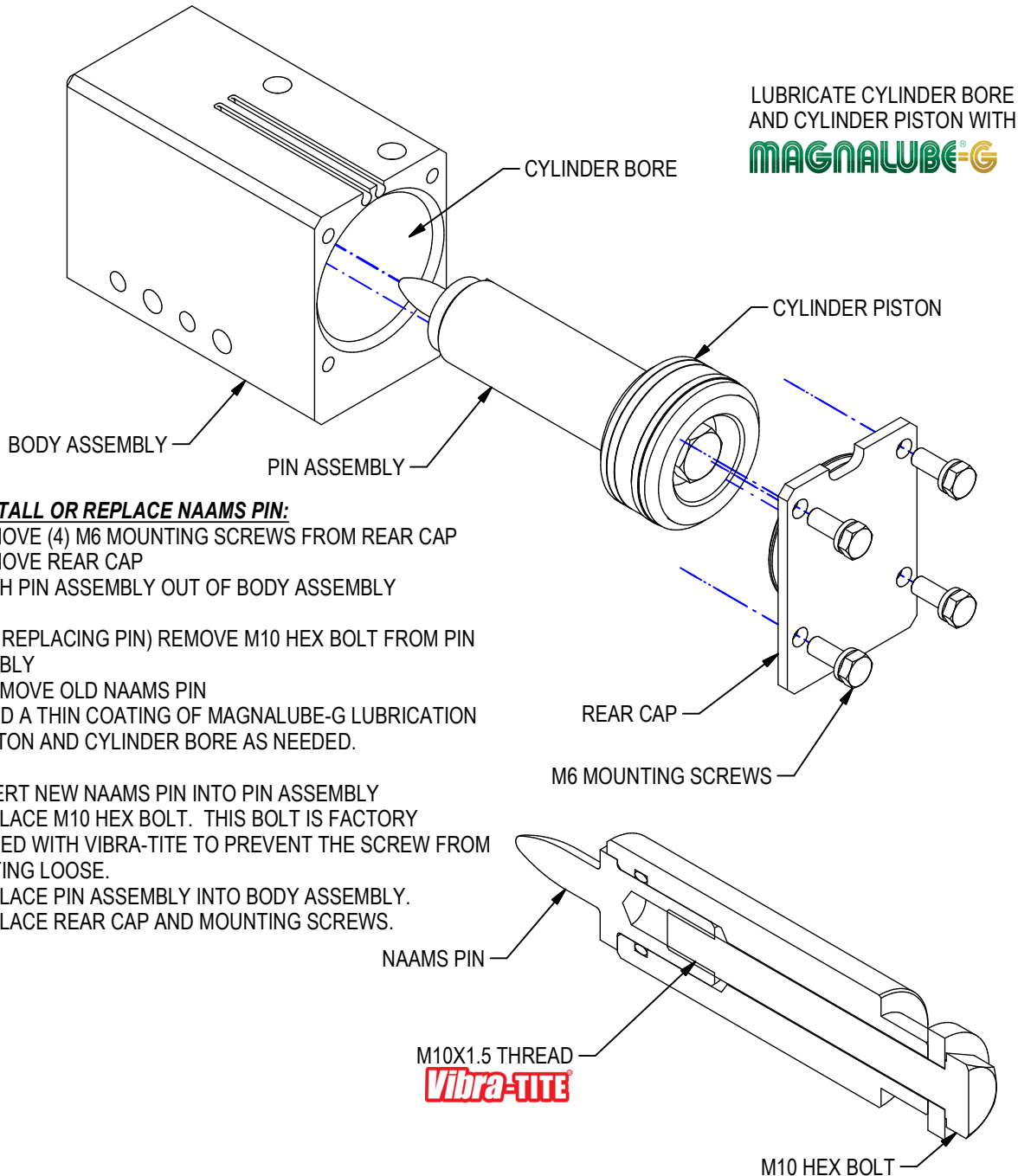
TO ORDER AS SPARE PARTS OR NOT AS AN ASSEMBLY

NAAMS PIN INFORMATION
ORDER AS NAAMS PIN NUMBER

SWITCH INFORMATION
ORDER AS VENDOR PART NUMBER

NAAMS RETRACTABLE PIN

INSTALLATION INFORMATION



LUBRICATE CYLINDER BORE
AND CYLINDER PISTON WITH

MAGNALUBE-G

TO INSTALL OR REPLACE NAAMS PIN:

- 1 - REMOVE (4) M6 MOUNTING SCREWS FROM REAR CAP
- 2 - REMOVE REAR CAP
- 3 - PUSH PIN ASSEMBLY OUT OF BODY ASSEMBLY

- 3A - (IF REPLACING PIN) REMOVE M10 HEX BOLT FROM PIN ASSEMBLY
- 3B - REMOVE OLD NAAMS PIN
- 3C - ADD A THIN COATING OF MAGNALUBE-G LUBRICATION TO PISTON AND CYLINDER BORE AS NEEDED.

- 4 - INSERT NEW NAAMS PIN INTO PIN ASSEMBLY
- 5 - REPLACE M10 HEX BOLT. THIS BOLT IS FACTORY SUPPLIED WITH VIBRA-TITE TO PREVENT THE SCREW FROM VIBRATING LOOSE.
- 6 - REPLACE PIN ASSEMBLY INTO BODY ASSEMBLY.
- 7 - REPLACE REAR CAP AND MOUNTING SCREWS.

CAROMATION PROUDLY USES **Vibra-TITE** THREADMATE AND **MAGNALUBE-G** LUBRICANTS.

INTERNAL COMPONENTS ARE FACTORY SUPPLIED WITH AN ADJUSTABLE, REMOVABLE, AND REUSABLE THREAD LOCKER THAT MEETS US MILITARY, DOD, AND AEROSPACE STANDARDS. NO NEED TO WORRY THAT THE SCREWS WILL VIBRATE LOOSE. IF ANTI-TAMPERING IS REQUIRED, PLEASE CONTACT CAROMATION.